

yonoh

YONOH is a design studio founded in Valencia in 2006 by Clara del Portillo and Alex Selma, two industrial designers who have united their creative interests. They work in the fields of product, graphic and interior design, with projects that stand out for their simplicity and functionality and designs with the emphasis on originality and innovation. YONOH has been singled out to receive leading international design awards like the Red Dot, If Design Award and Wallpaper* Design Award, among others.

YONOH es un estudio de diseño fundado en 2006 en Valencia por Clara del Portillo y Alex Selma, ambos diseñadores industriales. Uniendo sus inquietudes creativas trabajan en diseño de producto, gráfico e interiorismo. YONOH crea proyectos que se diferencian por su simplicidad y funcionalidad, diseños que respiran frescura y singularidad. YONOH ha sido galardonado con los premios de diseño más prestigiosos a nivel internacional, como el Red Dot, If Design Award, Good Design o Wallpaper* Design Award entre otros.



TEXTIL



Inspired by the weave of fabrics, TEXTIL by YONOH features a subtle elegant mesh-like pattern made up of smaller meshes. The version with a white background features different overlapping layers of colour in randomly combined compositions, while the plain-coloured models come in the same background shade as the white version's overlapping colours, thus creating visual interplay evocative of different superimposed textile weaves.

TEXTIL by YONOH se inspira en la superposición de texturas textiles para crear un entramado sutil y elegante, un dibujo generado por pequeñas cuadrículas que forman otras superficies mayores. La versión de fondo blanco superpone diferentes capas de color para generar composiciones que combinan de forma aleatoria. Las piezas monocolor por su parte toman como base cromática los mismos tonos que los superpuestos a la versión blanca, creando así juegos visuales basados en las superposiciones de diferentes tramas textiles.

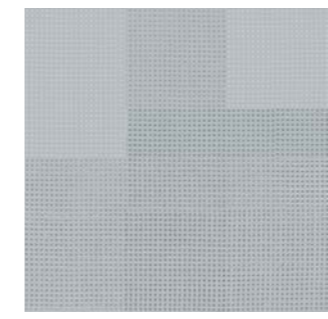


TEXTIL GREEN

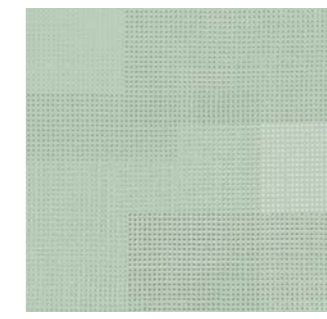
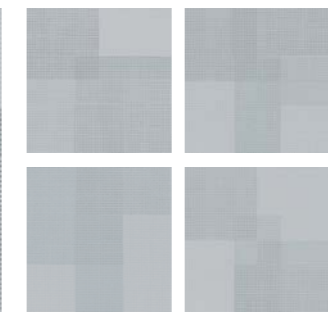




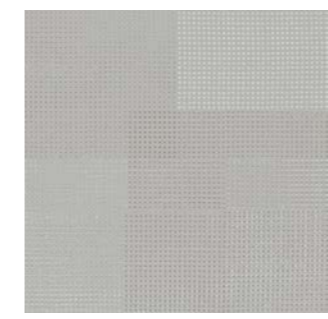
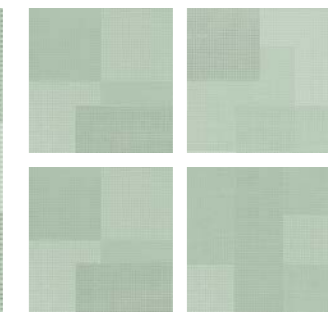
TEXIL BY YONOH



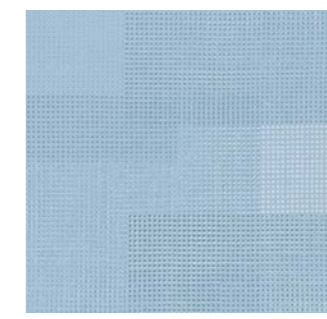
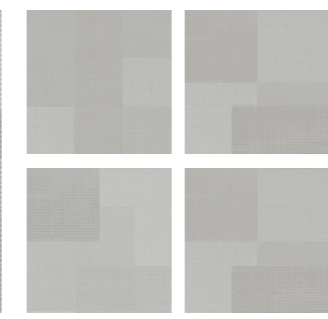
23918 TEXTIL GREY/20X20 Q-7
(20x20 cm) (7 7/8x7 7/8")
5 of 11 patterns



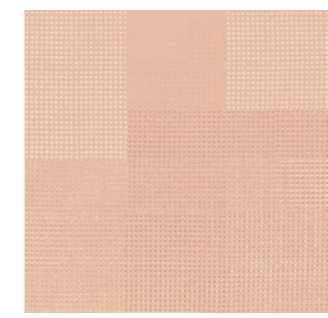
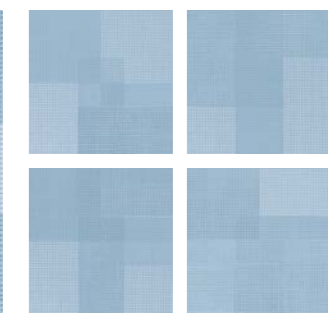
23919 TEXTIL GREEN/20X20 Q-7
(20x20 cm) (7 7/8x7 7/8")
5 of 11 patterns



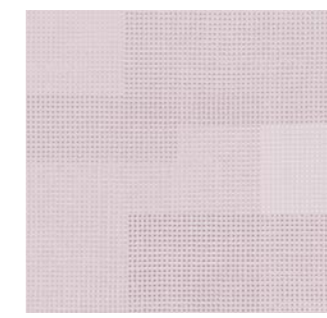
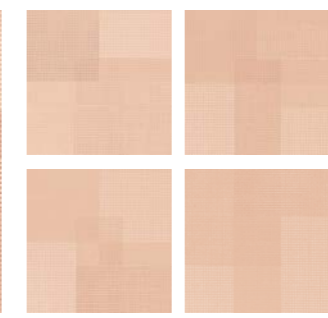
23920 TEXTIL TAUPE/20X20 Q-7
(20x20 cm) (7 7/8x7 7/8")
5 of 11 patterns



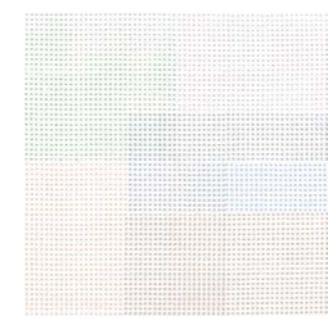
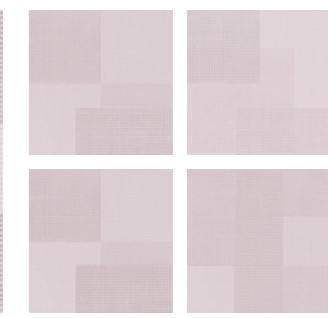
23921 TEXTIL BLUE/20X20 Q-7
(20x20 cm) (7 7/8x7 7/8")
5 of 11 patterns



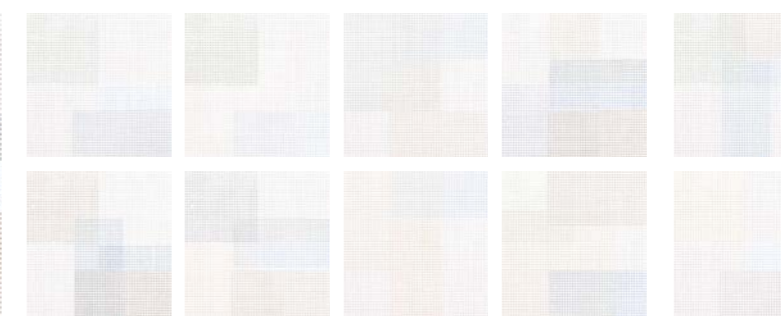
23922 TEXTIL LEATHER/20X20 Q-7
(20x20 cm) (7 7/8x7 7/8")
5 of 11 patterns



23987 TEXTIL PINK/20X20 Q-7
(20x20 cm) (7 7/8x7 7/8")
5 of 11 patterns



23917 TEXTIL DECOR/20X20 Q-7
(20x20 cm) (7 7/8x7 7/8")
11 patterns



TECHNICAL CHARACTERISTICS

	CERAMIC	SHOWER WALL	SHOWER FLOOR	INDOOR	OUTDOOR	SHADE VARIATION	MATT	GLOSS	HANDMADE DECORS	CLEANING NON-ABRASIVE	MESH	FLOOR TRAFFIC	SELF UNIT	SELF m ²	PIECES m ²	PIECES sq ft	PIECES BOX	m ² BOX	sq ft BOX	WEIGHT BOX (kg)	WEIGHT BOX (lb)	BOXES PALLET	m ² PALLET	sq ft PALLET	CHIP SIZE	THICKNESS (mm)	THICKNESS (inch)
TEXIL	•	•	•	•	•	•	•	•	•	•	•	•	•	•	25	2	26	1,04	11,19	19,47	42,9	72	74,68	806	•	8,5	0,33

PACKING