

RUGGINE SHINE

Monoporosa Rectificado
Rectified Wall Tiles



PERFIL

1.5x100 cm (x15.0 mm) 5/8"x39 1/2"
 PERFIL RUGGINE CALDERA
 V3960173 - 100029891 - G97
 PERFIL RUGGINE ALUMINIO
 V3960171 - 100029889 - G97
 PERFIL RUGGINE
 V3960170 - 100024179 - G97



RUGGINE CALDERA

33.3x100 cm (x9.2 mm) 13"x39 1/2"
 V1440094 - 100149908 - G261
 Butech recomienda junta *Recommends joint*
 colorstuk rapid n marron B22502010 - 100004303



RUGGINE ALUMINIO

33.3x100 cm (x9.2 mm) 13"x39 1/2"
 V1440008 - 100142906 - G261
 Butech recomienda junta *Recommends joint*
 colorstuk rapid n manhattan B22502002 - 100004295



RUGGINE

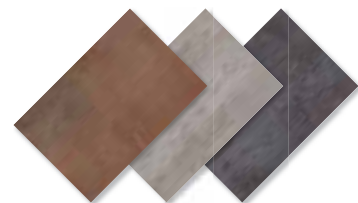
33.3x100 cm (x9.2 mm) 13"x39 1/2"
 V1440035 - 100144839 - G261
 Butech recomienda junta *Recommends joint*
 colorstuk rapid n antracita B22502005 - 100004298

COLECCIONES COMPLEMENTARIAS

COMPLEMENTARY COLLECTIONS
 Queens 20x33.3 cm

PAVIMENTO COMBINABLE

FLOOR TILE COMBINATIONS
 Serie Ferroker 44x66 cm, 59.6x120 cm,
 59.6x59.6 cm, 45x90 cm & 44.3x44.3 cm
 Pág 222-229



EMBALAJE PACKAGING	x CAJA BOX			x PALET			ADHESIVO	
	Modelo Model	Pieces	M ² (1)	Kg (1)	Box	M ² (1)		Kg (1)
Ruggine 33.3x100 cm	4	1.33	21.68	55	73.26	1192	Fr-one n	
Perfil 1.5x100 cm	15	0.45	5.40	28	12.60	151	Fr-one n	

(1) Valores aproximados Approximated values

RUGGINE SHINE

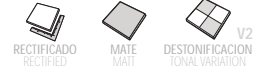


RUGGINE PLATINO

33.3x100 cm (x9.2 mm) 13"x39 1/2"
V1440031 - 100144503 - G261

Butech recomienda junta *Recommends joint*
colorstuk rapid n blanco B22501001 - 100004294

Monoporosa Rectificado Rectified Wall Tiles



PERFIL

1.5x100 cm (x15.0 mm) 5/8"x39 1/2"

PERFIL RUGGINE PLATINO

V3960286 - 100091985 - G97

PERFIL RUGGINE TITANIO

V3960289 - 100091986 - G97

PERFIL RUGGINE NIQUEL

V3960290 - 100091984 - G97



RUGGINE TITANIO

33.3x100 cm (x9.2 mm) 13"x39 1/2"
V1440012 - 100142907 - G261

Butech recomienda junta *Recommends joint*
colorstuk rapid n marfil B22502009 - 100004302



RUGGINE NIQUEL

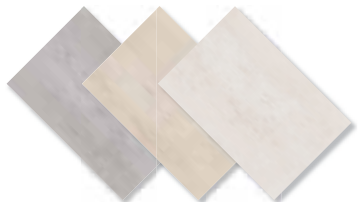
33.3x100 cm (x9.2 mm) 13"x39 1/2"
V1440029 - 100144502 - G261

Butech recomienda junta *Recommends joint*
colorstuk rapid n gris B22502013 - 100004305

COLECCIONES COMPLEMENTARIAS

COMPLEMENTARY COLLECTIONS

Queens 20x33.3 cm



PAVIMENTO COMBINABLE

FLOOR TILE COMBINATIONS

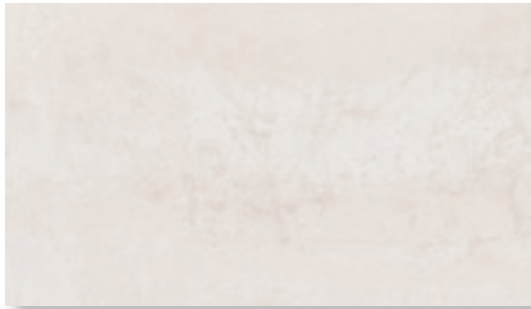
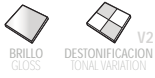
Serie Ferroker 44x66 cm, 59.6x120 cm,
59.6x59.6 cm, 45x90 cm & 44.3x44.3 cm
Pág 222-229

EMBALAJE PACKAGING Modelo Model	x CAJA BOX			x PALET			ADHESIVO Butech
	Pieces	M ² (1)	Kg (1)	Box	M ² (1)	Kg (1)	
Ruggine 33.3x100 cm	4	1.33	21.68	55	73.26	1192	Fr-one n
Perfil 1.5x100 cm	15	0.45	5.40	28	12.60	151	Fr-one n

(1) Valores aproximados Approximated values

RUGGINE SHINE

Monoporosa
Wall Tiles



RUGGINE PLATINO

33.3x59.2 cm (x8.6 mm) 13"x23 1/4"

V1349985 - 100216460 - G226

Butech Recomienda junta *Recommends joint*
colorstuk rapid n blanco B22501001 - 100004294



RUGGINE TITANIO

33.3x59.2 cm (x8.6 mm) 13"x23 1/4"

V1349988 - 100216428 - G226

Butech Recomienda junta *Recommends joint*
colorstuk rapid n marfil B22502009 - 100004302



RUGGINE NÍQUEL

33.3x59.2 cm (x8.6 mm) 13"x23 1/4"

V1349992 - 100216417 - G226

Butech Recomienda junta *Recommends joint*
colorstuk rapid n gris B22502013 - 100004305

COLECCIONES COMPLEMENTARIAS

COMPLEMENTARY COLLECTIONS

Queens 20x33.3 cm

Pág 200

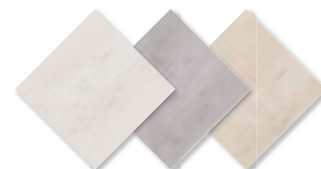
PAVIMENTO COMBINABLE

FLOOR TILE COMBINATIONS

Ferroker Platino, Níquel,

Aluminio & Dark 44.3x44.3 cm

Pág 222-229

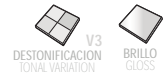


EMBALAJE PACKAGING Modelo Model	x CAJA BOX			x PALET			ADHESIVO
	Pieces	M ² (1)	Kg (1)	Box	M ² (1)	Kg (1)	Butech
Ruggine 33.3x59.2 cm	6	1.18	18.78	48	56.77	902	Fr-one n

(1) Valores aproximados Approximated values

RUGGINE SHINE

Monoporosa
Wall Tiles



RUGGINE ALUMINIO

33.3x59.2 cm (x8.6 mm) 13"x23 1/4"

V1349977 - 100216427 - G226

Butech Recomendada junta *Recommends joint*
colorstuk rapid n manhattan B22502002 - 100004295



RUGGINE

33.3x59.2 cm (x8.6 mm) 13"x23 1/4"

V1349995 - 100216426 - G226

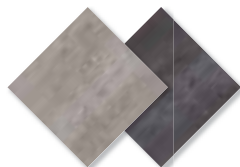
Butech Recomendada junta *Recommends joint*
colorstuk rapid n antracita B22502005 - 100004298

COLECCIONES COMPLEMENTARIAS

COMPLEMENTARY COLLECTIONS

Queens 20x33.3 cm

Pág 200



PAVIMENTO COMBINABLE

FLOOR TILE COMBINATIONS

Ferroker Platino, Níquel,
Aluminio & Dark 44.3x44.3 cm

Pág 222-229

EMBALAJE PACKAGING Modelo Model	x CAJA BOX			x PALET			ADHESIVO
	Pieces	M ² (1)	Kg (1)	Box	M ² (1)	Kg (1)	Butech
Ruggine 33.3x59.2 cm	6	1.18	18.78	48	56.77	902	Fr-one n

(1) Valores aproximados Approximated values

WALL TILES

MOSAICS

FLOOR TILES

PAR-KER

TECHNICAL GUIDE

DISTRIBUTORS